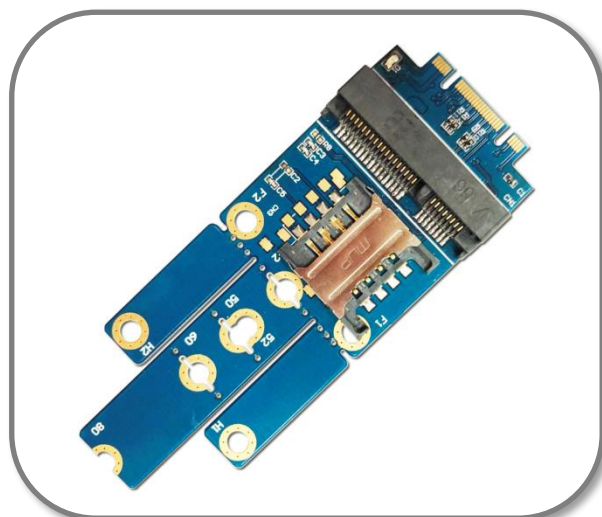


**NORTHBRIDGE > PCIe > M.2 > NM61A****mPCIe to M.2 B+M Key with SIM Card**

NM61A is a bypass adapter from mPCIe slot to M.2 B+M Key Gold Finger with SIM card.

You can insert the USB3.0 or PCIe interface Module's Mini Card (Full/Half size)

Features

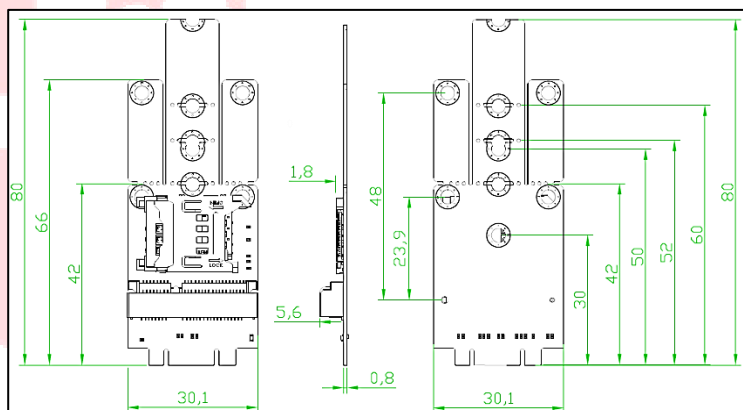
- ◆ M.2 B+M Key Gold Finger (3042/3050/3052/3060/3080)
- ◆ Support USB3.0 or PCIe Interface Module
- ◆ Support Full/Half Mini Card size
- ◆ Support SIM Card
- ◆ High quality connectors for long service life

Specification

Model Name	NM61A
Host	M.2 B+M Key Gold Finger
Device	mPCIe (Full/ Half mini card)
Operation Temperature	(Commerce Grade) : 0~+85℃
Dimension (Maximum)	L*W*D=80*30*6(mm)
Weight	≒ 10g

Order Information

Part Number	Description
NM61A-P01	mPCIe to M.2 B+M Key (PCIe Lane#0 + SIM Slot*1)
NM61A-S	mPCIe to M.2 B+M Key (SATA Lane#0)
NM61A-U3	mPCIe to M.2 B+M Key (USB3.0 + SIM Slot*1)

**C-Ming Technology Co., LTD**

2F, No.5, Alley8, Siwei lane, ZhongZheng Road, Xindian District New Taipei City 231, Taiwan (R.O.C)

Tel: (886) 2-2218-1670 Fax: (886) 2-2218-1570

E-mail : sales@cm-tech.com.tw