



C-Ming Technology Co., Ltd.

Product Definition

- No-brand Product OEM/ODM Product
 Semi-finished Product Component

SDCFA-C02

SD to High-Speed CF Type II Adapter

Specifications for Approval

Approval	Manager	Issued By

Revision History

Revision	Date	Description	PM
Rev 2.2	Feb 22, 2012	Add certification / Address change	Phil

C-Ming Technology Co., Ltd.

4F., No.3, Aly. 8, Siwei Ln., Zhongzheng Rd., Xindian Dist.,
New Taipei City 231, Taiwan (R.O.C.)
TEL: 886-2-2218-1670

FAX: 886-2-2218-1570
E-mail: sales@cm-tech.com.tw

Index

1	Introduction	1
2	Features and Specifications.....	2
2.1	Features.....	2
2.2	Specifications	3
2.3	Application Diagram.....	4
3	Accessories	5
3.1	Standard Accessories	5
3.2	Optional Accessories	5
4	Mechanical Information	6
4.1	SDCFA-C02 Overview	6
5	Package.....	7
5.1	Package Card	7
5.2	Front & Back Labels.....	8
5.3	Volume & Weight	8
6	Safety Certificate.....	9
6.1	CE	9
6.2	FCC.....	10
	Appendix	11

1 Introduction



C-Ming Technology proudly presents you a perfect solution for converting the SD card to high-speed CF Card Type II. SDCFA-C02 is ready for SD 3.0 and can support the new exFAT file system on Windows OS. This adapter is also equipped with high-speed CF interface and the access rate is faster than any similar products ever.

SDCFA-C02 supports converting SDHC, SD, miniSD (with adapter), microSD (with adapter), MMC, RS-MMC (with adapter), and even the next generation SD 3.0 card with exFAT file system to Type II CF.

SDCFA-C02 is equipped with high-speed CF interface, and it can show the real speed of inserted SD card. Any similar products would always seriously slow down the access rate of inserted media. However with SDCFA-C02 this situation would never occur.

SDCFA-C02 is very convenient for any digital device equipped with CF Type II socket, like Digital Camera, DSLR, PDA, Digital Photo Frame, Card Reader, Notebook, etc. Get the real power of SD card to your digital devices; just contact **C-Ming Technology** now!

- Please be noted that SDCFA-C02 will not accelerate the inserted media.
- Before using a card within exFAT file system on SDCFA-C02, please make sure your CF device also supports exFAT; or you may not use them on the CF device.
- Currently only Windows 7 / Vista / XP can support exFAT file system. (Windows XP requires Update for Windows XP-KB955704.)

2 Features and Specifications

2.1 Features

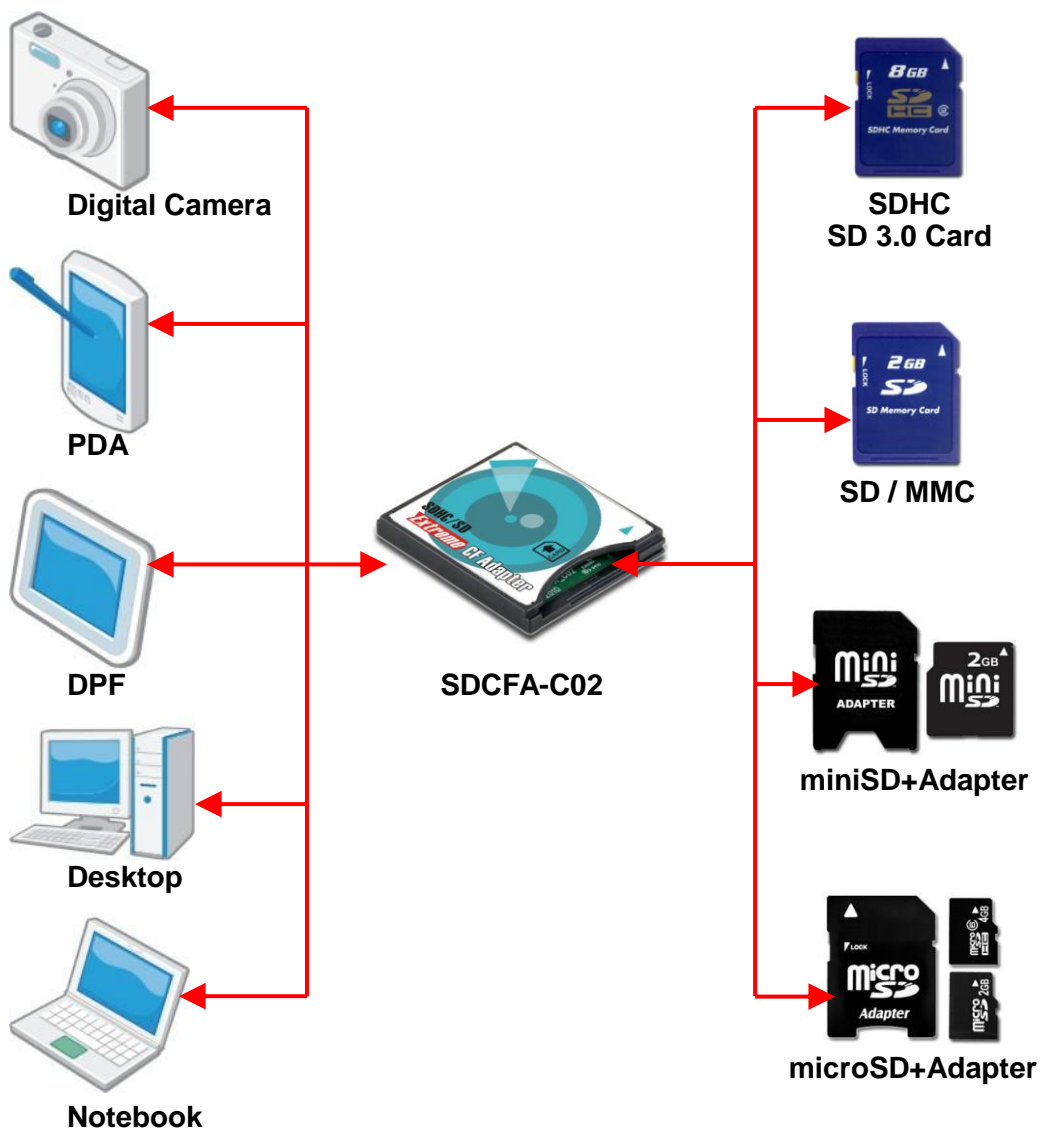
- Compatible with SD system Spec 2.0.
- Supports SD cards with various kinds of form factor, including SDHC / SD / miniSDHC (with adapter) / miniSD (with adapter) / microSDHC (with adapter) / microSD (with adapter) / TransFlash (with adapter).
- Compatible with MMC system Spec 4.0.
- Supports MMC cards with various kinds of form factor.
- SD 3.0 ready; accept SD 3.0 card with exFAT file system on Windows OS.
- Supports CF true IDE mode, memory mode, and I/O mode.
- High-speed CF interface with extreme performance.
- IDE interface supports DMA mode and PIO mode.
- Equipped with push-push SD socket for easy card insertion and extraction.
- Type II CF design.
- Supports Windows / Mac OS / Linux.

2.2 Specifications

Input Socket	
SD (Push-Push)	<ul style="list-style-type: none"> • SD system Spec 2.0 • MMC system Spec 4.0 • SD system Spec 3.0 ready
Output Interface	
CompactFlash Type II (True IDE mode / IO mode / Memory mode)	
Supporting Cards	
SDHC	<ul style="list-style-type: none"> • 4GB~32GB, Class 1-10
SD	<ul style="list-style-type: none"> • 8MB~2GB, Class 1-10
miniSDHC	<ul style="list-style-type: none"> • 4GB~32GB, Class 1-10 (Adapter Required)
miniSD	<ul style="list-style-type: none"> • 8MB~2GB, Class 1-10 (Adapter Required)
microSDHC	<ul style="list-style-type: none"> • 4GB~32GB, Class 1-10 (Adapter Required)
microSD	<ul style="list-style-type: none"> • 8MB~2GB, Class 1-10 (Adapter Required)
SD 3.0 Card	<ul style="list-style-type: none"> • SD 3.0 Card > 32GB <p>(Tested Media: Panasonic 48GB SDXC & Sandisk 64GB SDXC)</p>
Supporting OS	
Windows XP / Mac OS / Linux	
Safety Approval	
CE / FCC	
Physical Character	
Length	<ul style="list-style-type: none"> • 42.8 mm
Width	<ul style="list-style-type: none"> • 36.4 mm
Height	<ul style="list-style-type: none"> • 5.0 mm
Weight	
≈ 10g	

- Before using a card within exFAT file system on SDCFA-C02, please make sure your CF device also supports exFAT; or you may not use them on the CF device.
- Currently only Windows 7 / Vista / XP can support exFAT file system. (Windows XP requires Update for Windows XP-KB955704.)

2.3 Application Diagram



3 Accessories

3.1 Standard Accessories

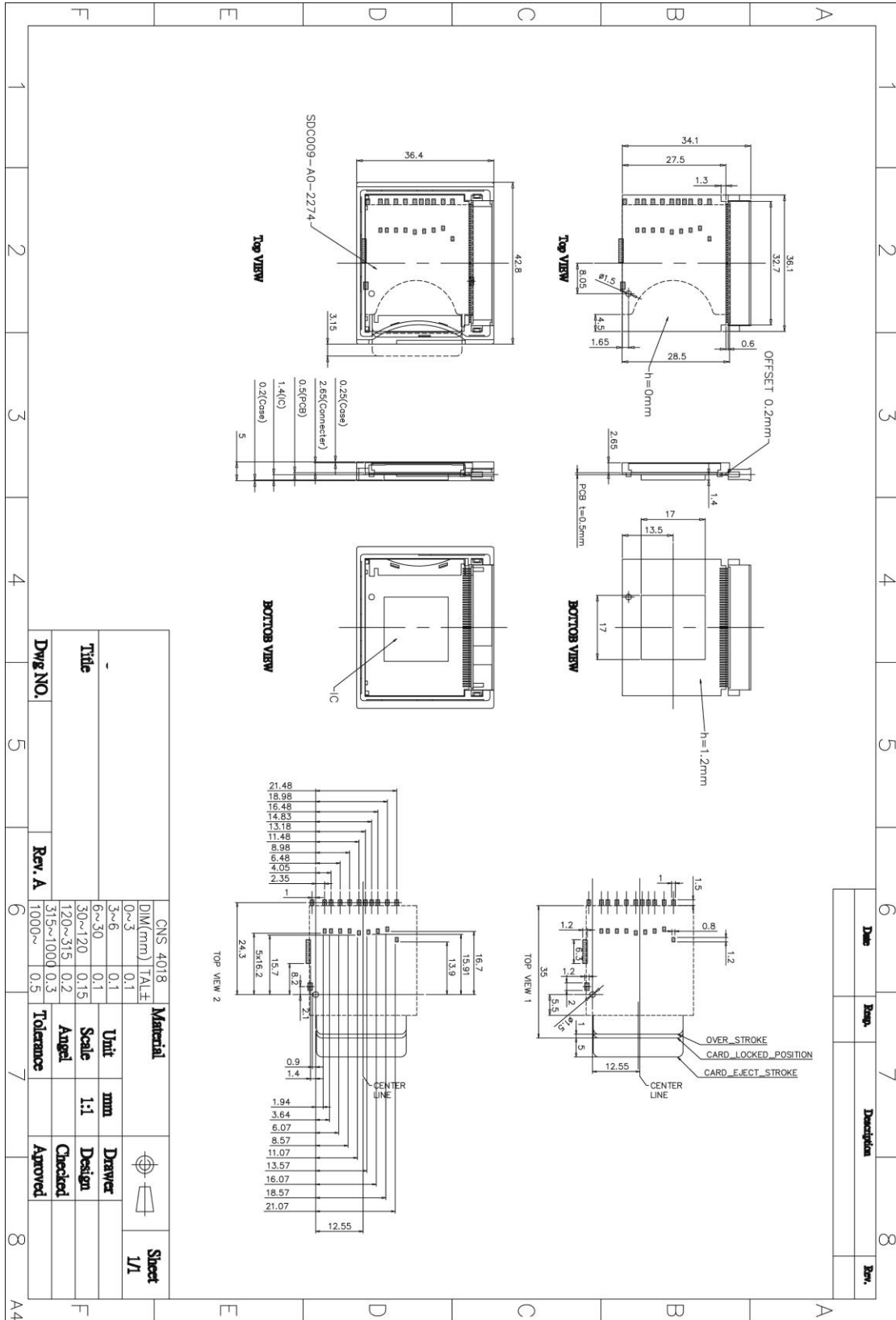
- SDCFA-C02 Adapter x1

3.2 Optional Accessories

- Front Label x1
- Back Label x1
- Blister Pack Set x1

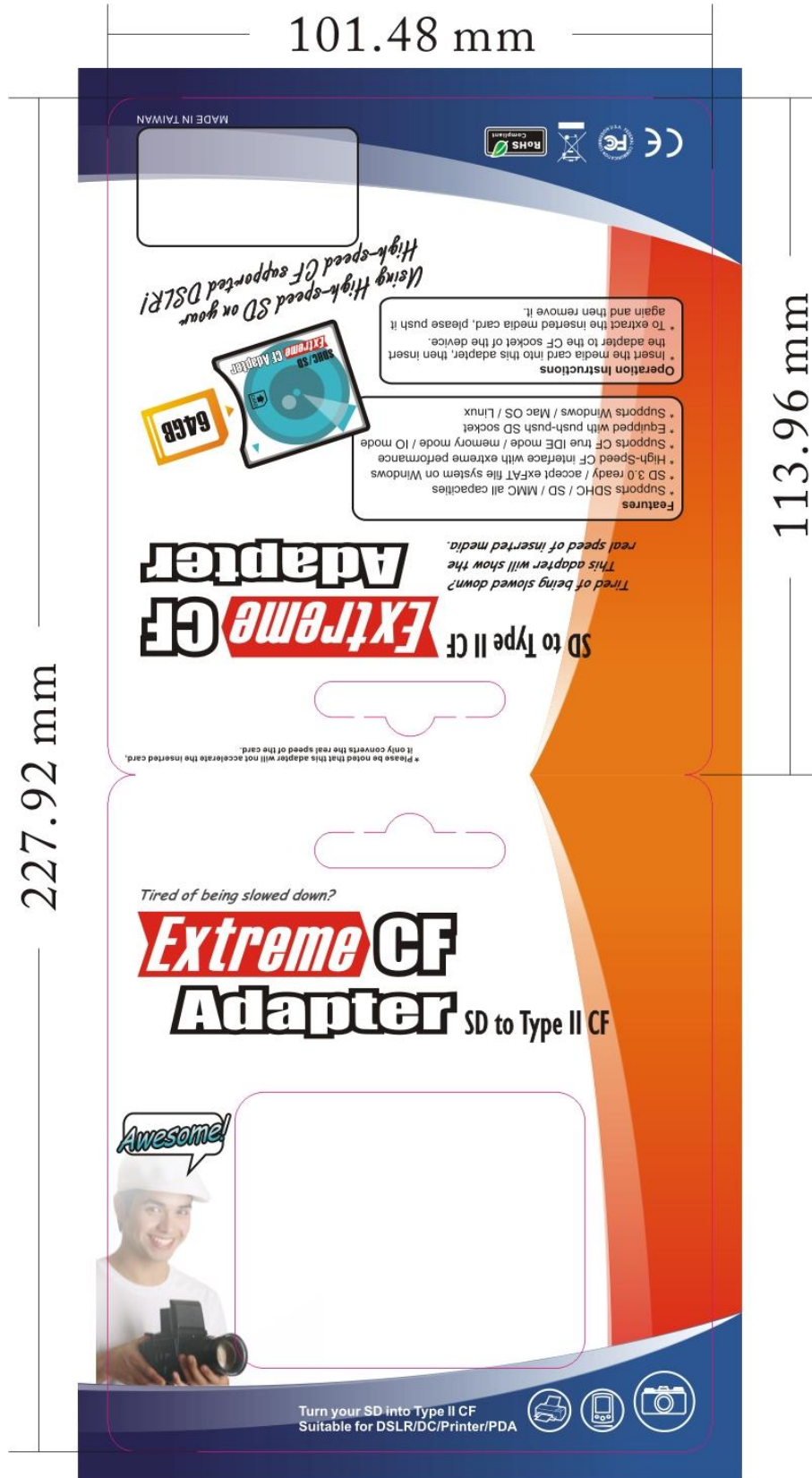
4 Mechanical Information

4.1 SDCFA-C02 Overview

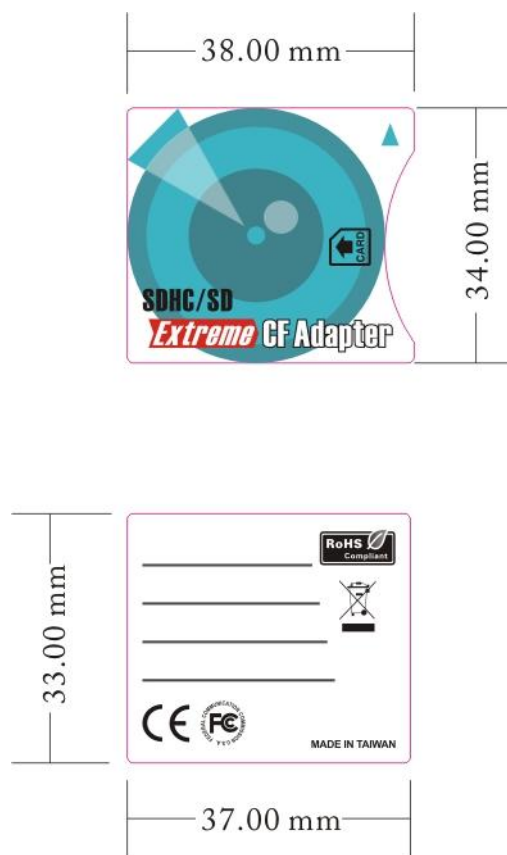


5 Package

5.1 Package Card



5.2 Front & Back Labels



5.3 Volume & Weight

- Blister Pack x 50 pcs → Inner Carton x 1
- Inner Carton x 8 → Outer Carton x 1
- Outer Carton x 1 = Blister Pack x 400 pcs

- Inner Carton: L265mm x W125mm x H110mm (Inside Diameter)
- Outer Carton: L525mm x W270mm x H240mm (Inside Diameter)

- G. W. per Blister Pack ≐ 21g
- G. W. per Inner Carton (50 pcs) ≐ 1.2kg
- G. W. per Outer Carton (400 pcs) ≐ 11kg

6 Safety Certificate

6.1 CE

Certificate

Issue Date: 2010/07/13
Ref. Report No. ISL-10HE195CE

Product Name: : SD to UDMA CF Card Adapter
 Model(s) : **SDCFA-C02**
 Responsible Party : **C-MING TECHNOLOGY Co., LTD.**
 Address : 2F., No. 104, Minzu Rd., Sindian City,
 Taipei County 231, Taiwan

We, **International Standards Laboratory**, hereby certify that:

The device bearing the trade name and model specified above has been shown to comply with the applicable technical standards as indicated in the measurement report and was tested in accordance with the measurement procedures specified in European Council Directive- EMC Directive 2004/108/EC. The device was passed the test performed according to :

Standards:

EN 55022:2006 +A1:2007 / CISPR 22:2005 +A1:2005 / AS/NZS CISPR 22: 2006
 EN 61000-3-2: 2006 and IEC 61000-3-2: 2005
 EN 61000-3-3: 1995+A1: 2001+A2:2005 and IEC 61000-3-3: 1994+A1: 2001+A2: 2005
 EN55024:1998+A1:2001+A2:2003 / CISPR 24:1997+A1:2001+A2:2002
 EN 61000-4-2: 1995+A1: 1998+A2: 2001 and IEC 61000-4-2: 1995+A1: 1998+A2: 2000
 EN 61000-4-3: 2006 and IEC 61000-4-3: 2006
 EN 61000-4-4: 2004 and IEC 61000-4-4: 2004
 EN 61000-4-5: 2006 and IEC 61000-4-5: 2005
 EN 61000-4-6: 2007 and IEC 61000-4-6: 2003+A1:2004+A2: 2006
 EN 61000-4-8: 1993+A1: 2001 and IEC 61000-4-8: 1993+A1: 2000
 EN 61000-4-11: 2004 and IEC 61000-4-11: 2004

I attest to the accuracy of data and all measurements reported herein were performed by me or were made under my supervision and are correct to the best of my knowledge and belief. I assume full responsibility for the completeness of these measurements and vouch for the qualifications of all persons taking them.



 Jim Chu/ Director

International Standards laboratory

Lung-Tan LAB:

No. 120, Lane 180, San Ho Tsuen, Hsin Ho Rd.
 Lung-Tan Hsiang, Tao Yuan County 325, Taiwan
 Tel: 886-3-407-1718; Fax: 886-3407-1738

Hsi-Chih LAB:

No. 65, Gu Dai Keng St.. Hsichih, Taipei Hsien
 22117, Taiwan.
 Tel: 886-2-2646-2550; Fax: 886-2-2646-4641

6.2 FCC

Certificate

Issue Date: 2010/07/13
 Ref. Report No. ISL-10HE195FB

Product Name: : SD to UDMA CF Card Adapter
 Model(s) : **SDCFA-C02**
 Applicant : **C-MING TECHNOLOGY Co., LTD.**
 Address : 2F., No. 104, Minzu Rd., Sindian City,
 Taipei County 231, Taiwan

We, **International Standards Laboratory**, hereby certify that:

The device bearing the trade name and model specified above has been shown to comply with the applicable technical standards as indicated in the measurement report and was tested in accordance with the measurement procedures specified. (refer to Test Report if any modifications were made for compliance).

Standards:

FCC CFR Title 47 Part 15 Subpart B: 2008- Section 15.107 and 15.109
 ANSI C63.4-2003
 Industry Canada Interference-Causing Equipment Standard ICES-003 Issue 4: 2004
Class B

I attest to the accuracy of data and all measurements reported herein were performed by me or were made under my supervision and are correct to the best of my knowledge and belief. I assume full responsibility for the completeness of these measurements and vouch for the qualifications of all persons taking them.



Jim Chu/ Director

International Standards Laboratory

Lung-Tan LAB:

No. 120, Lane 180, San Ho Tsuen, Hsin Ho Rd.
 Lung-Tan Hsiang, Tao Yuan County 325,
 Taiwan

Tel: 886-3-407-1718; Fax: 886-3407-1738

Hsi-Chih LAB:

No. 65, Gu Dai Keng St., Hsichih, Taipei Hsien
 22117, Taiwan.

Tel: 886-2-2646-2550; Fax: 886-2-2646-4641

Appendix