

# PCI express 3.0 x8 to x1 Extension Cable

Brand name: ADT-LINK

Product name: PCIe x8 to x1 extension cable

Product model: R81SF, R81SL, R81SR

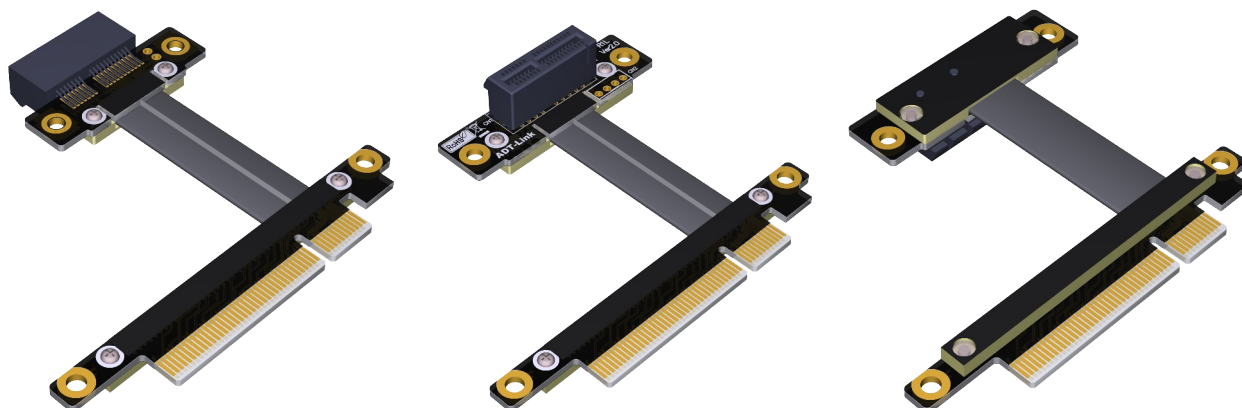
Transfer speed: PCIe3.0 x1, 8G/bps (Max.)

Wire length: 3 ~ 100 cm, the length can be customized,

Application: PCIe x1 card to PCIe x8 slot extension cable

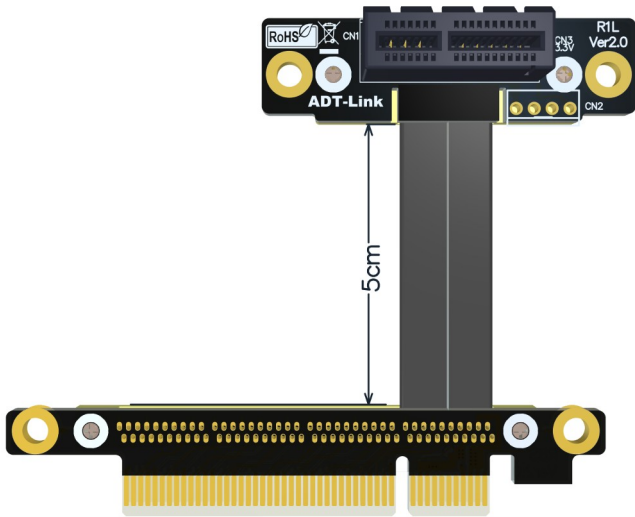
## ADT R81 series Part-Number Description:

P/N	Description	Bandwidth
R81SL	PCI-E x8 edge to x4 connector. turn 90 degree upright right angle extension cables	PCIe 3.0 x1 (8G/bps)
R81SF	PCI-E x8 edge to x4 connector. turn 180 degree splint vertical extension cables	PCIe 3.0 x1 (8G/bps)
R81SR	PCI-E x8 edge to x4 connector. turn 270 degree inverted reverse extension cables	PCIe 3.0 x1 (8G/bps)



## Cable length Description:

The length of the wire refers to the part of the visible wire. It does not include the PCB and the connector. For the wire length, please refer to the 5cm arrow in the figure below.



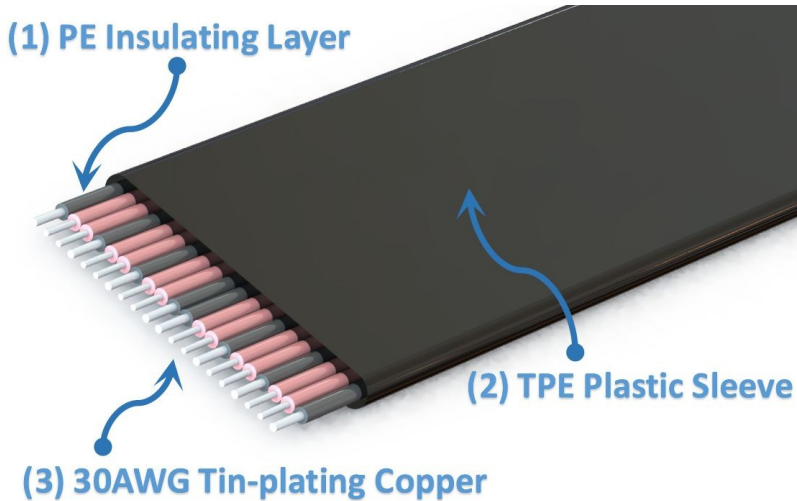
**Dimension Description:** (female to male)

Part-Number	Description
R81SF	PCIe x8 to x1 flat mount extension cable
R81SL	PCIe x8 to x1 left angle extension cable
R81SR	PCIe x8 to x1 Right angle extension cable

**Q&A:**

**Is there any EMI shielding for Cable?**

The extender utilizes the latest materials for EMI shielding with five sole flat cables design. This technique allows each cable to be fully covered by electromagnetic interference shielding with conducting polymer to guard against incoming or outgoing emissions of electromagnetic frequencies, minimize disturbance and degradation on performance, and reduce the weight of the extender.



**What is the thickness of the cable? Is it soft? Can it be bent?**

The thickness of the cable wire is 1.4mm, so the wire is softer. The wire can be bent or folded, but do not pull it.



**Photo:**

