

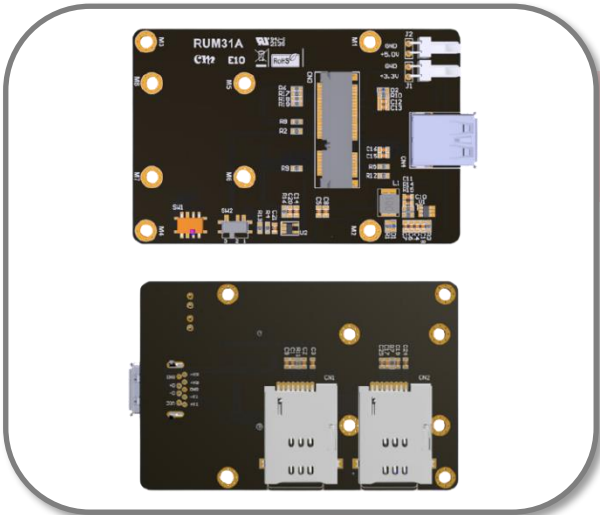


SOUTHBRIDGE > Raspberry Pi Adapter > **RUM31A**

mPCIe card 3G / 4G module to USB 3.2 Gen1 for Raspberry Pi Adapter

RUM31A adapter is designed for Raspberry Pi that converts 3G/4G wireless mPCIe Card to USB3.0. Insert your mPCIe card with 3G/4G/LTE/HSPA, global positioning system, and LTE functions to this adapter card, and then through the USB3.0 port. Dual Standard SIM card Push & Push connector is provided.

RUM31A supports maximum 6W power consumption.



Features

- ◆ USB 3.0 Type A Female
- ◆ Support mPCIe Rev 2.1 specification
- ◆ Support Full/Half mPCIe dimension
- ◆ Support Dual SIM card mPCIe LTE module
- ◆ Push & Push Normal Open SIM card socket
- ◆ Wireless enable/disable SW
- ◆ Support External Power 3.3V
- ◆ Support External Power 5V
- ◆ High quality connectors for long service life

Specification

Model Name	RUM31A
Host	USB3.0 Type A Female
Device	mPCIe card
Operation Temperature	(Commerce Grade) : 0~+85°C
Dimension (Maximum)	L*W=85*56 (mm)
Weight	≒ 10g

