

PCIe 3.0 x8 to x8 Extension Cable

Brand name: ADT-LINK

Product name: PCIe x8 to x8 extension cable

Product model: R88SF

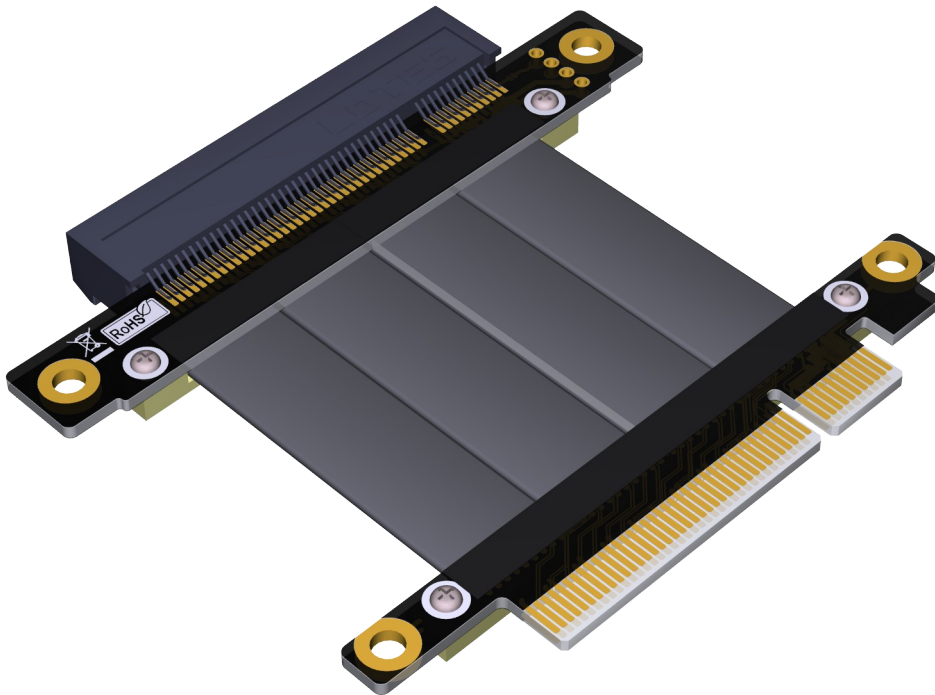
Transfer speed: PCIe3.0 x8 to x8, 64G/bps (Max.)

Wire length: 3 ~ 100 cm, the length can be customized,

Application: PCIe x8 to PCIe x8 slot extension cable

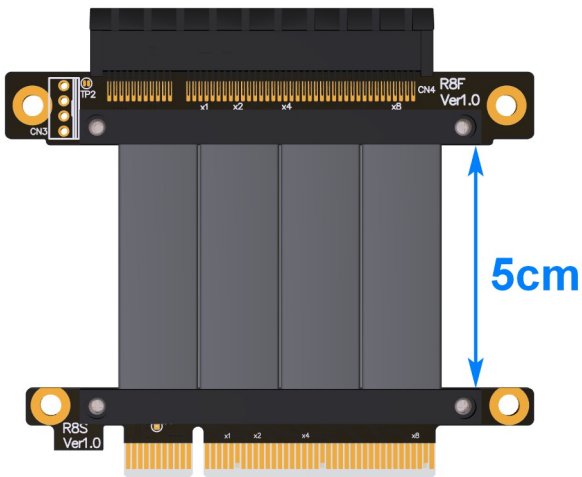
ADT R88 series Part-Number Description:

Part-Number	Description	Bandwidth
R88SF	PCI-E x8 to x8 turn 180 degree flat mount extension cables	PCIe 3.0 x8 (64G/bps)



Cable length Description:

The length of the wire refers to the part of the visible wire. It does not include the PCB and the connector. For the wire length, please refer to the 5cm blue arrow in the figure below.

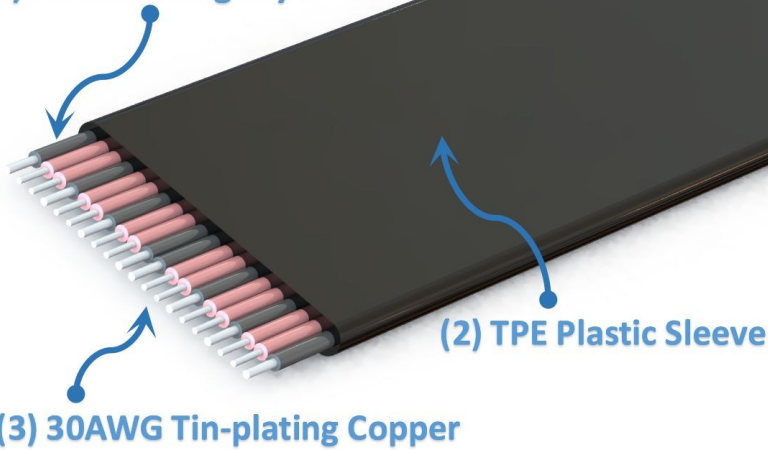


Q&A:

Is there any EMI shielding for Cable?

The extender utilizes the latest materials for EMI shielding with five sole flat cables design. This technique allows each cable to be fully covered by electromagnetic interference shielding with conducting polymer to guard against incoming or outgoing emissions of electromagnetic frequencies, minimize disturbance and degradation on performance, and reduce the weight of the extender.

(1) PE Insulating Layer



What is the thickness of the cable? Is it soft? Can it be bent?

The thickness of the cable wire is 1.4mm, so the wire is softer. The wire can be bent or folded, but do not pull it.



Photo:



