

PCI express 3.0 x8 to M.2 WiFi Extension Cable

Brand name: ADT-LINK

Product name: PCIe x8 to M.2 WiFi extension cable

Product model: R85SF

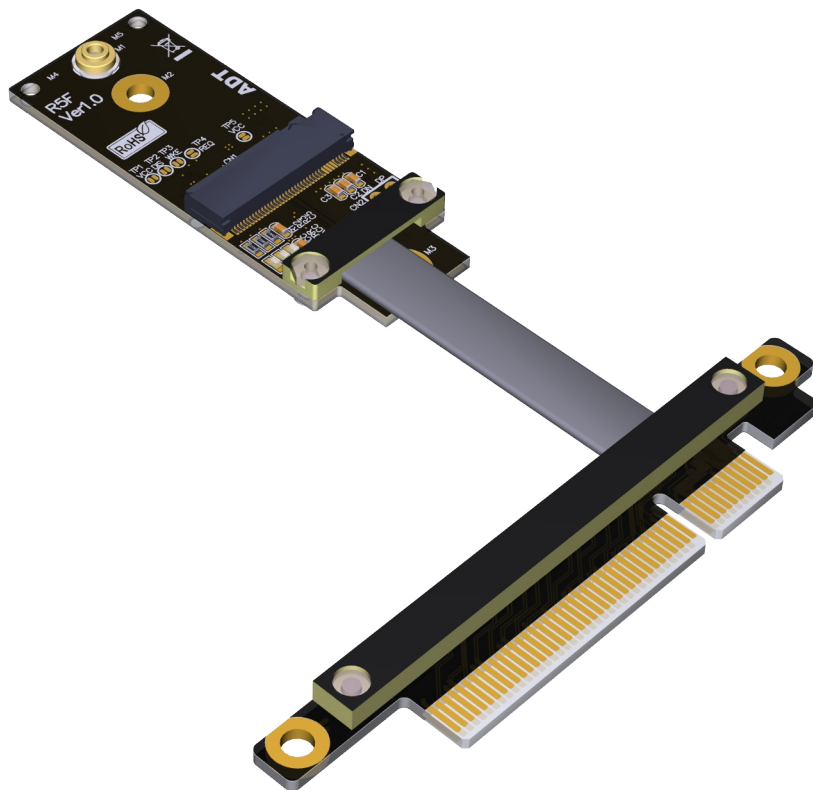
Transfer speed: PCIe3.0 x1, 8G/bps (Max.)

Wire length: 3 ~ 100 cm, the length can be customized,

Application: M.2 WiFi card to PCIe x8 slot extension cable

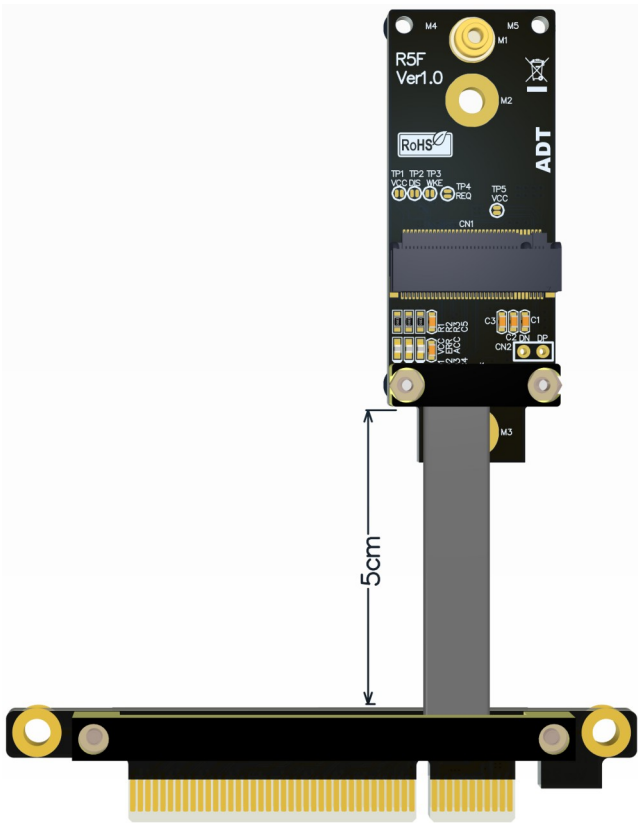
ADT R85 series Part-Number Description:

P/N	Description	Bandwidth
R85SF	PCI-E x8 edge to M.2 key A.E. WiFi connector extension cables	PCIe 3.0 x1 (8G/bps)



Cable length Description:

The length of the wire refers to the part of the visible wire. It does not include the PCB and the connector. For the wire length, please refer to the 5cm arrow in the figure below.

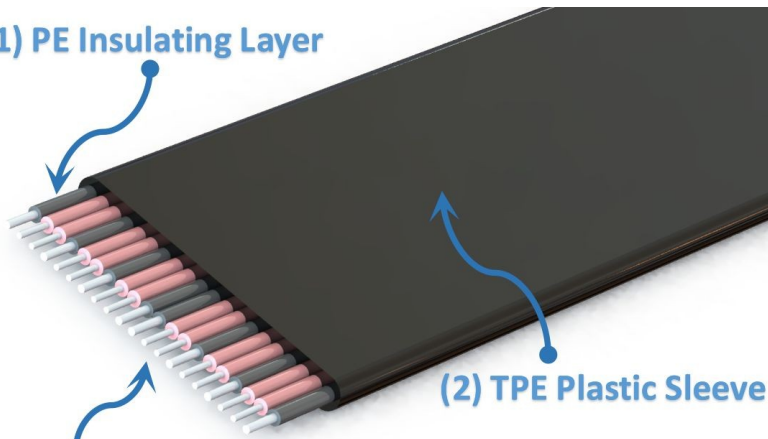


Q&A:

Is there any EMI shielding for Cable?

The extender utilizes the latest materials for EMI shielding with five sole flat cables design. This technique allows each cable to be fully covered by electromagnetic interference shielding with conducting polymer to guard against incoming or outgoing emissions of electromagnetic frequencies, minimize disturbance and degradation on performance, and reduce the weight of the extender.

(1) PE Insulating Layer



(2) TPE Plastic Sleeve

(3) 30AWG Tin-plating Copper

What is the thickness of the cable? Is it soft? Can it be bent?

The thickness of the cable wire is 1.4mm, so the wire is softer. The wire can be bent or folded, but do not pull it.



Photo:

