



C-Ming Technology Co., Ltd.

Product Definition

- No-brand Product OEM/ODM Product
 Semi-finished Product Component

SDCBA-C01 **SDHC/SD/MMC to CardBus PC Card(32-bit)** **High Speed Adapter**

Specifications for Approval

Approval	Manager	Issued By

Revision History

Revision	Date	Description	PM
1.0	January, 2009		PHIL

C-Ming Technology Co., Ltd.

2F., No.104, MinZu Rd., Sindian City,
Taipei Country 231, Taiwan (R.O.C.)
TEL: 886-2-2218-1670

FAX: 886-2-22218-1570
E-mail: phil@cm-tech.com.tw

Index

1	Introduction	1
2	Features and Specifications.....	2
2.1	Features.....	2
2.2	Specifications	3
2.3	Application Diagram.....	4
3	Accessories	5
3.1	Standard Accessories	5
3.2	Optional Accessories	5
4	Mechanical Information	6
4.1	SDCBA-C01 Overview.....	6
4.2	PCB Overview.....	7
5	Test Report	9
6	Package.....	10
6.1	Front & Back Labels.....	10
6.2	Serial Number Definition	10
7	Safety Certificate.....	11
	Appendix	12

1 Introduction



C-Ming Technology proudly presents you a perfect solution for accessing the SDHC (Secure Digital High Capacity) / SD (Secure Digital) / MMC (MultiMediaCard) via 32-bit CardBus interface with a higher speed.

This adapter supports converting SD, SDHC, miniSD (with adapter), microSD (with adapter), microSDHC (with adapter), MMC, RS-MMC (with adapter), MMC Plus, and MMC Mobile (with Adapter) to Type II CardBus PC Card. A Push-Push socket is equipped for easy insertion/extraction of supported cards.

SDCBA-C01 is also compliant with SDIO specification, which allows you to use SDIO card with all kinds of applications on your computer.

SDCBA-C01 is a very convenient and high speed SDHC/SD/MMC card adapter/reader for any computer equipped with 32-bit CardBus socket. If you are tired of using the card reader with a slow speed, you should absolutely try SDCBA-C01; just contact **C-Ming Technology** now!

2 Features and Specifications

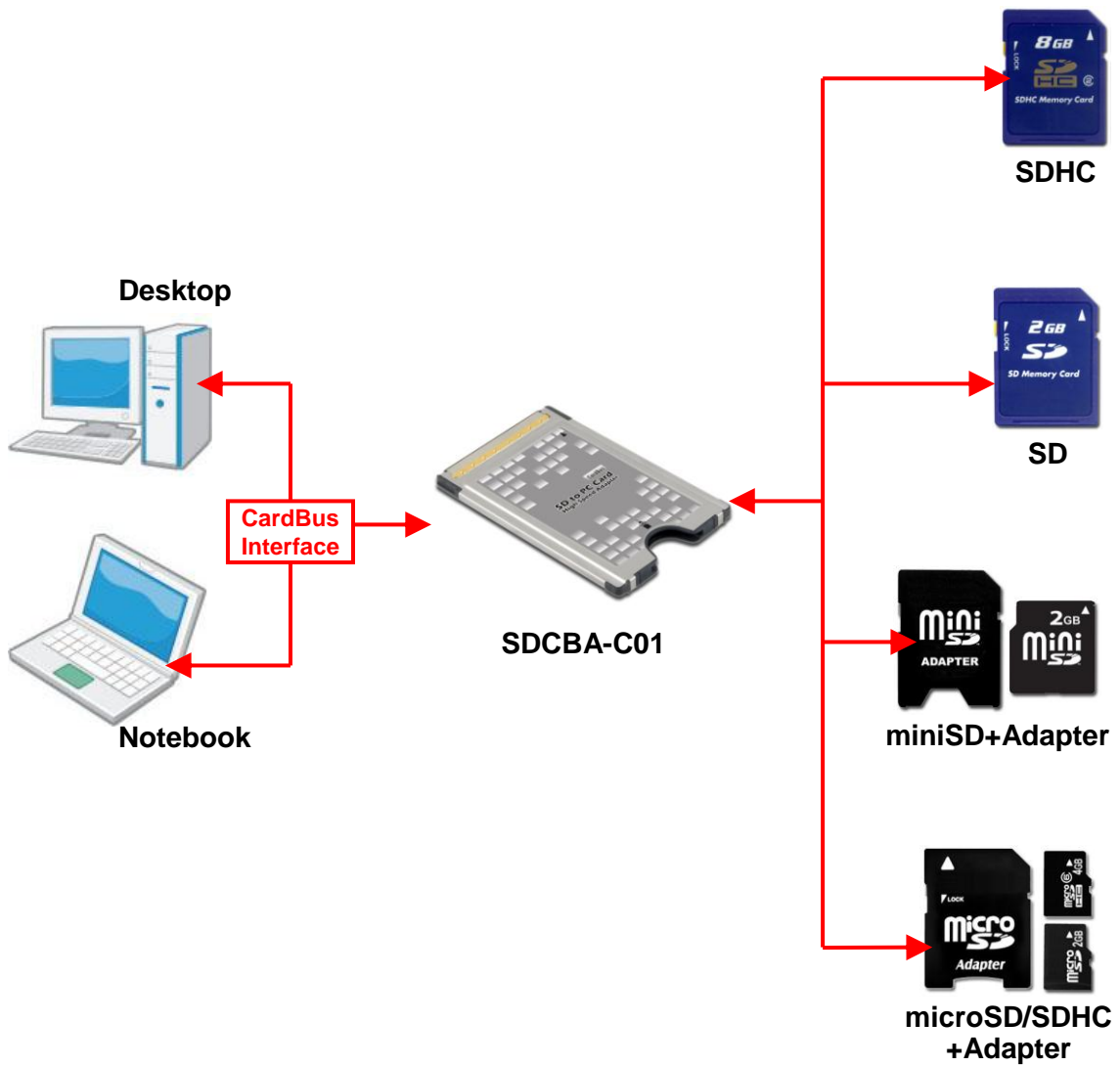
2.1 Features

- Compliant with 32-bit CardBus Type II PC Card interface (JEIDA 4.2).
Maximum frequency reaches 33MHz.
- Compliant with SD Memory Card Specification 2.0.
- Supports SDHC / High Speed SD Clock (50MHz)
- Compliant with SDIO Specification 1.1.
- Supports all kinds of SDIO Card Applications.
- Compliant with SD Host Controller Standard Specification 1.0.
- Compliant with MultiMediaCard Specification 4.1.
- Supports MMC Plus and MMC Mobile (with adapter.).
- Push-Push card slot for easy insertion/extraction of card.
- Low power consumption, 3.3V single power operation.
- Software Suspend mode compliant with ACPI.
- Supports Hardware Suspend.

2.2 Specifications

Input Socket	
Single Socket (Push-Push)	<ul style="list-style-type: none"> • SDHC / SD (SD Specification 2.0) • SDIO (SDIO Specification 1.1) • MMC (MMC Specification 4.1)
Output Interface	
32-bit CardBus Type II PC Card	
Supporting Memory Cards	
SDHC	• 4GB~
SD	• 8MB~2GB
miniSD	• 8MB~2GB (Adapter Required)
microSDHC	• 4GB~ (Adapter Required)
microSD	• 8MB~2GB (Adapter Required)
MMC / MMC Plus	• All Capacities
RS-MMC / MMC Mobile	• All Capacities
Controller	
RICOH R5xxxx	
Supporting OS	
Microsoft Windows XP / VISTA	
Safety Approval	
CE / FCC	
Physical Character	
Length	• 85.0 mm
Width	• 54.0 mm
Height	• 5.0 mm
Weight	

2.3 Application Diagram



3 Accessories

3.1 Standard Accessories

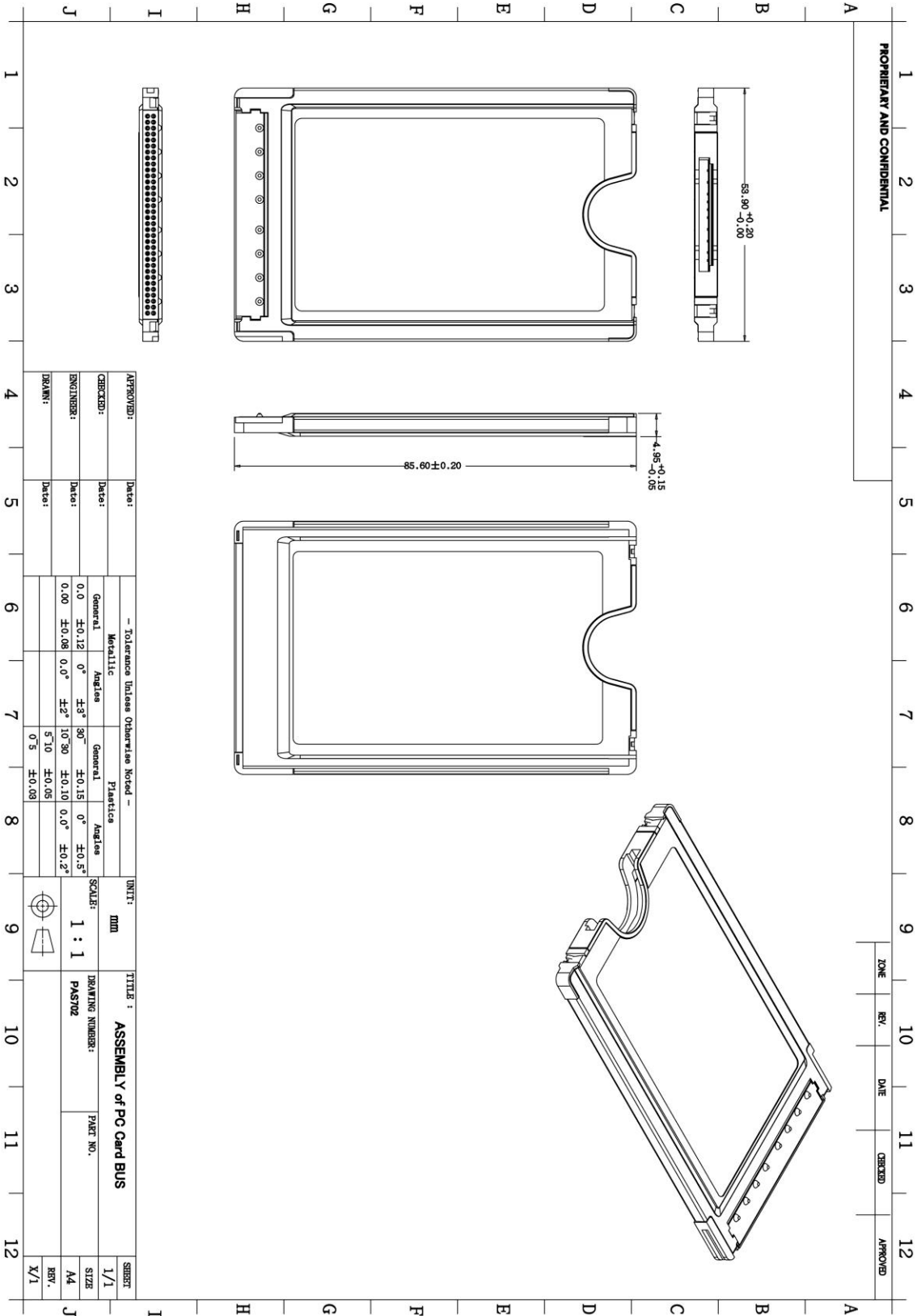
- SDCBA-C01 Adapter x1

3.2 Optional Accessories

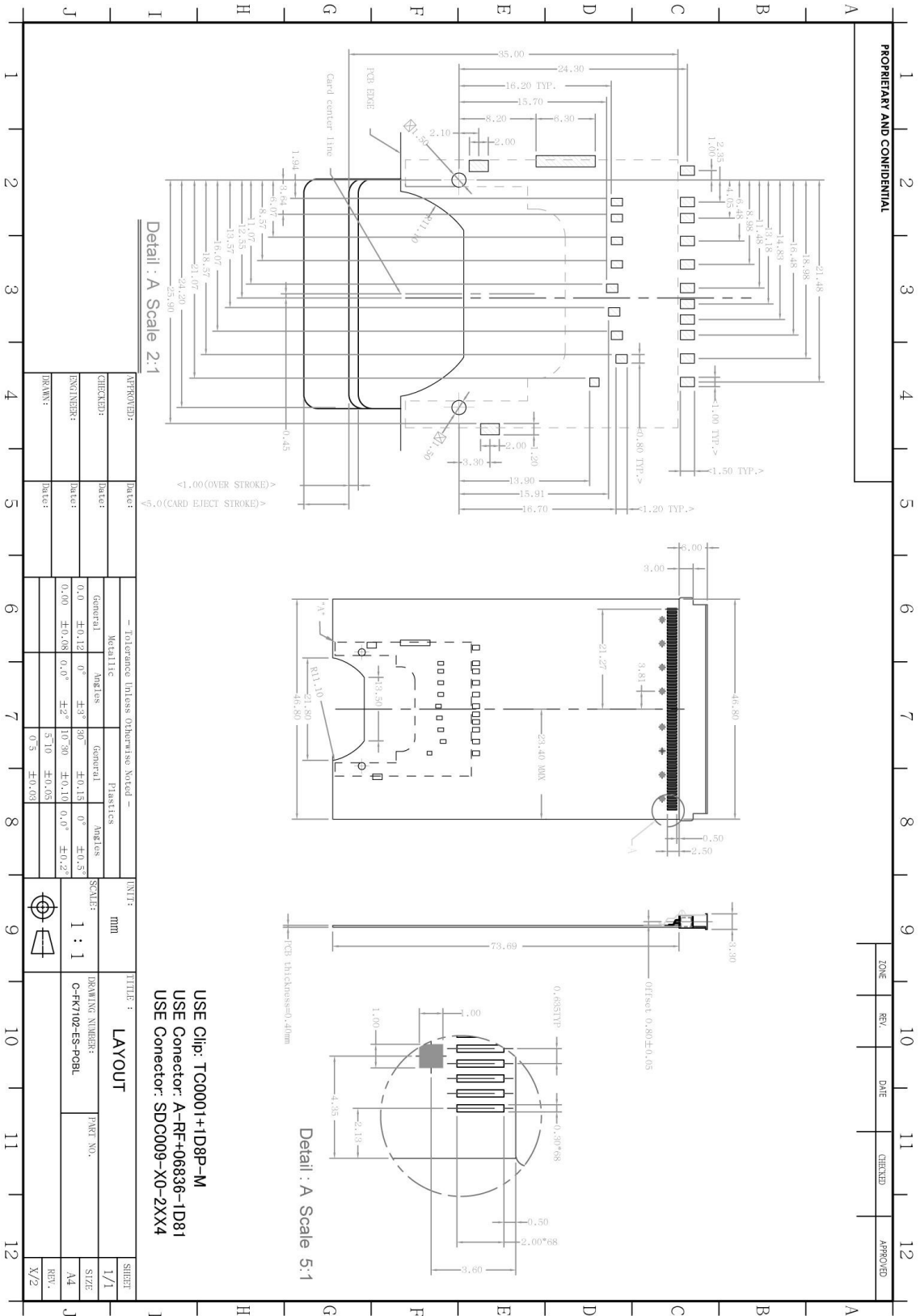
- Front Label x1
- Back Label x1

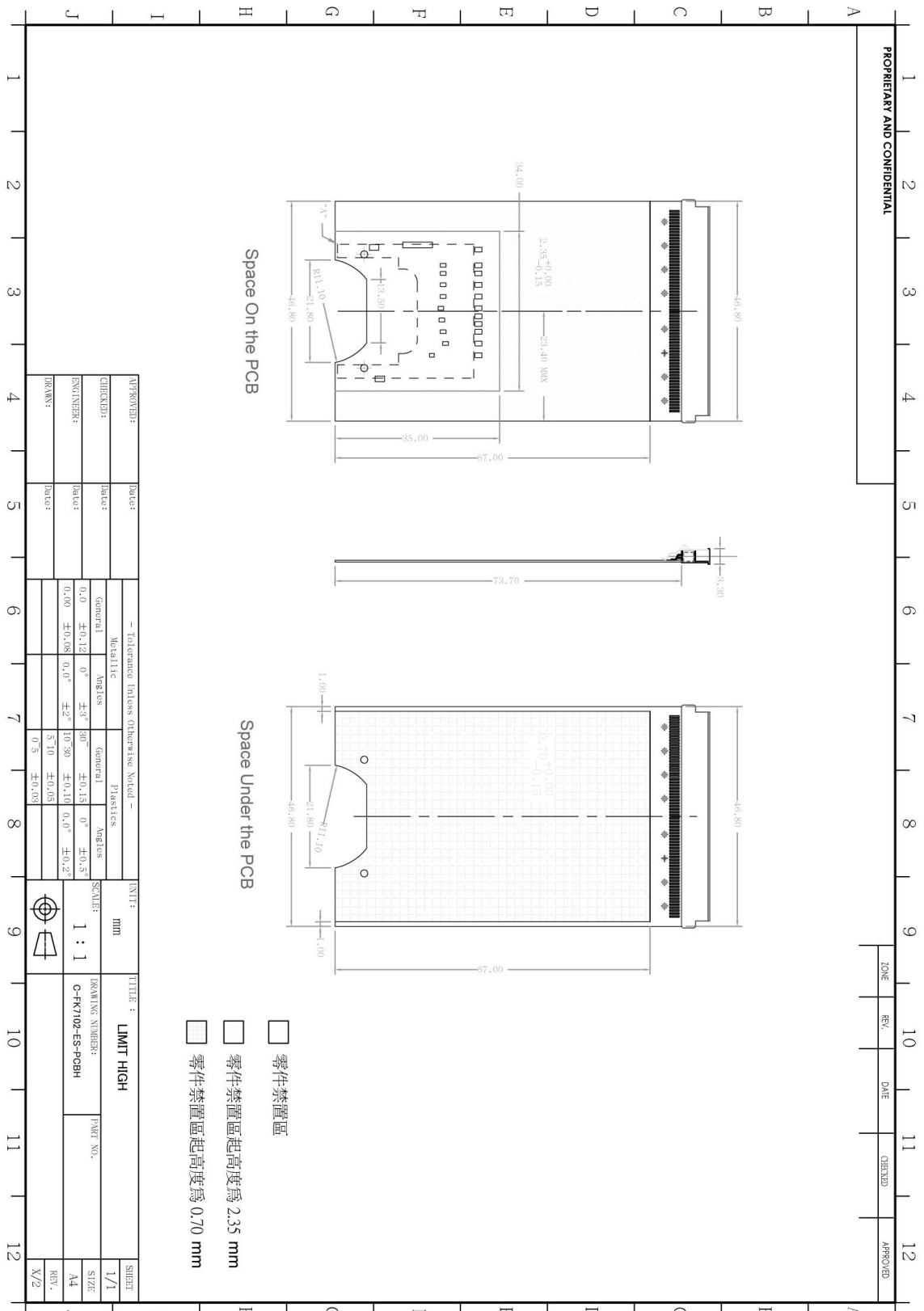
4 Mechanical Information

4.1 SDCBA-C01 Overview



4.2 PCB Overview





5 Test Report

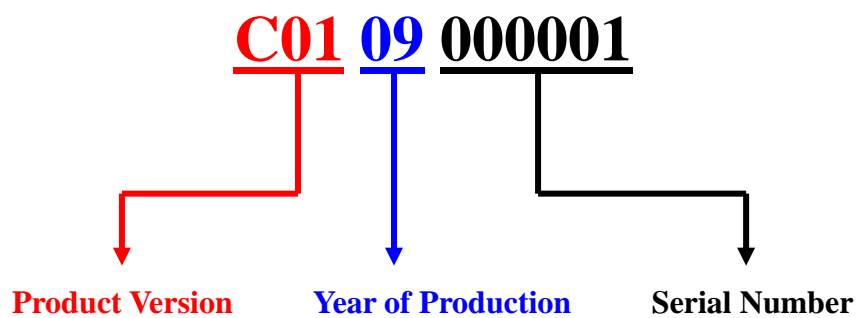
Test Device	<i>CM SDCBA-C01 CardBus Adapter</i>			
Test Hardware	<i>ASUS Notebook W3A</i>			
System memory	<i>2GB</i>			
Test OS	<i>Microsoft WindowsXP Service Pack 3</i>			
Test Software	<i>HDBENCH 3.4</i>			
Test Card	Read Speed	Write Speed	Random Read Speed	Random Write Speed
PhotoFast_DualChannel_SDHC_150X_4GB	22908	8855	20475	2293
SanDisk_Extreme_ESP_SDHC_class6_4GB	22831	16179	20098	4836
SanDisk_Extreme_ESP_SDHC_class6_8GB	23151	16060	20039	4765
SanDisk_Extreme_SDHC_class6_4GB	23073	13511	20537	2290
SanDisk_Extreme_SDHC_class6_8GB	23068	13765	20475	2333
SanDisk_Extreme_SDHC_class6_16GB	23068	13566	20475	2306
SanDisk_SDCard_class2_2GB	11680	5903	10672	1281
SanDisk_SDHCCard_class2_4GB	11640	5315	10654	1086
SanDisk_SDHCCard_class2_8GB	11619	5375	10654	1082
SanDisk_Ultrall_SDHC_class4_4GB	17902	14994	16179	4728
SanDisk_Ultrall_SDHC_class4_8GB	17852	14559	16060	4654
SanDisk_Ultrall_SDHC_class4_16GB	17805	14793	16100	4563
SanDisk_videoHD_SDHC_class4_8GB	11681	9524	10885	3796

6 Package

6.1 Front & Back Labels



6.2 Serial Number Definition



7 Safety Certificate

Appendix